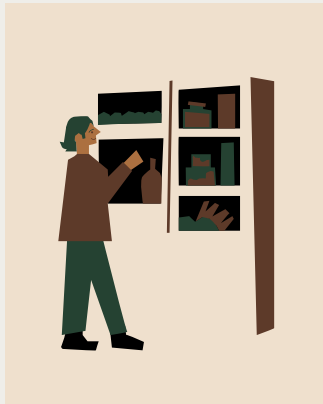


FLI COUNCIL

We are a student group dedicated to supporting *FLI* students through community building, resource distribution, and institutional advocacy. To contact us, reach out to flicouncil@swarthmore.edu.



FLI FOOD PANTRY

a **student-led** initiative to address food insecurity at Swarthmore and to help fill an unmet need for the growing Swat *FLI* community.

expectations & FAQs

01

This pantry is for Low-Income students only.

Low-income Swatties face food insecurity at a much higher rate than their much wealthier counterparts. Please do not take anything if you are not in need.

02

Take only what you need.

Be considerate of fellow *FLI* students, and do not take when you are not in absolutely need. We understand that all *FLI* students have serious needs, and aim to reach as many students as possible.

03

Clean up after yourself!

If there are empty boxes, break them down and throw them out. Again, unpaid *FLI* students are managing the pantry so we ask you to be kind and help us out.

04

How often is the food pantry restocked?

Periodically. We aim to restock every two to four weeks, but have to consider budgeting and capacity when restocking. We'll always email our ListServ about updates.

05

I don't have OneCard Access! What do I do?

Contact Jasmine Owens (jowens2) from the *FLI* Office to get access. Due to privacy reasons, *FLI Council* is not able to access a list of all *FLI* students -- please redirect any questions regarding access to their office.

Have feedback? Scan this QR Code!



We try to accommodate everyone's dietary needs and preferences, so filling it out really helps!